

Making a difference on inequalities in a time of austerity – can evidence help?

“In a time of Populism, Brexit and Trump...”

Dominic Harrison

@BWDDPH

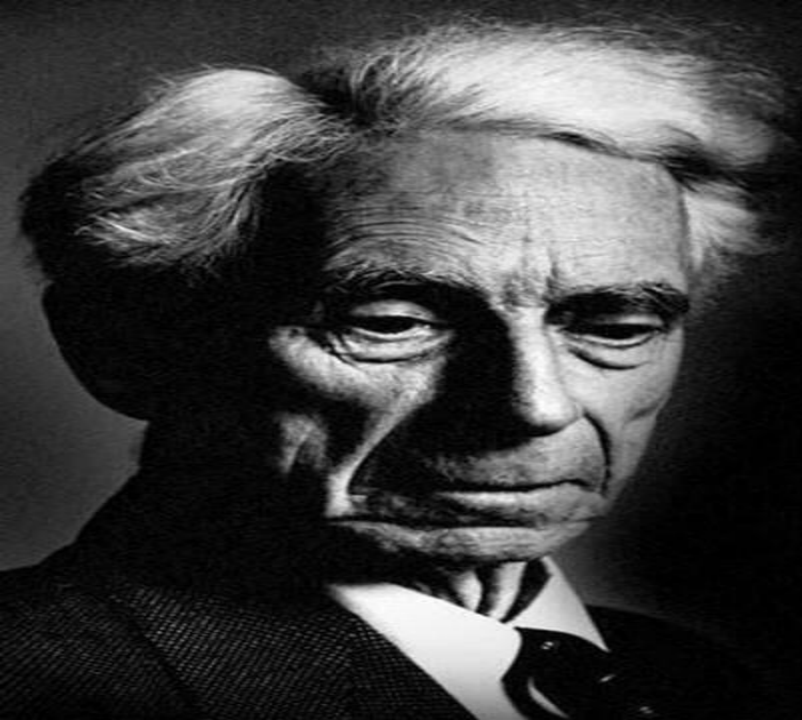


Populism

“support for the concerns of ordinary people”

“the quality of appealing to or being aimed at ordinary people.”

“Populism is a political doctrine that proposes that the common people are exploited by a privileged elite, and which seeks to resolve this...”



The whole problem with the world is that fools and fanatics are always so certain of themselves, and wiser people so full of doubts.

-Bertrand Russell

..a lot more of this is happeningit will get worse..

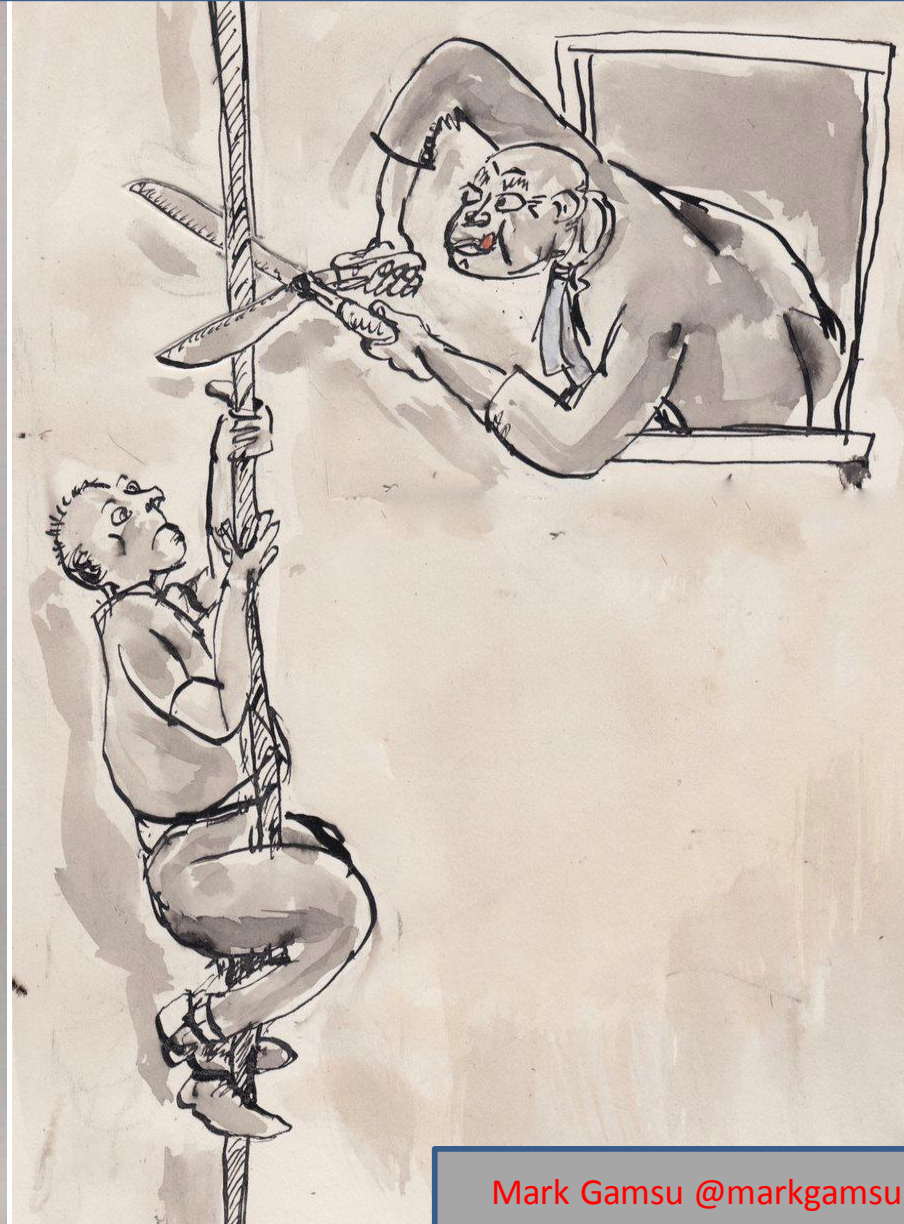
EQUALITY OF SACRIFICE?



From "PLESS," (Organ of the N.G.L.C.)

VOTE LABOUR

LEAFLET No. 1.—Printed and Published by the Twentieth Century Press (1912), Ltd., T.U. in all Departments, 103, Southwark Street, London, S.E.1.—25074

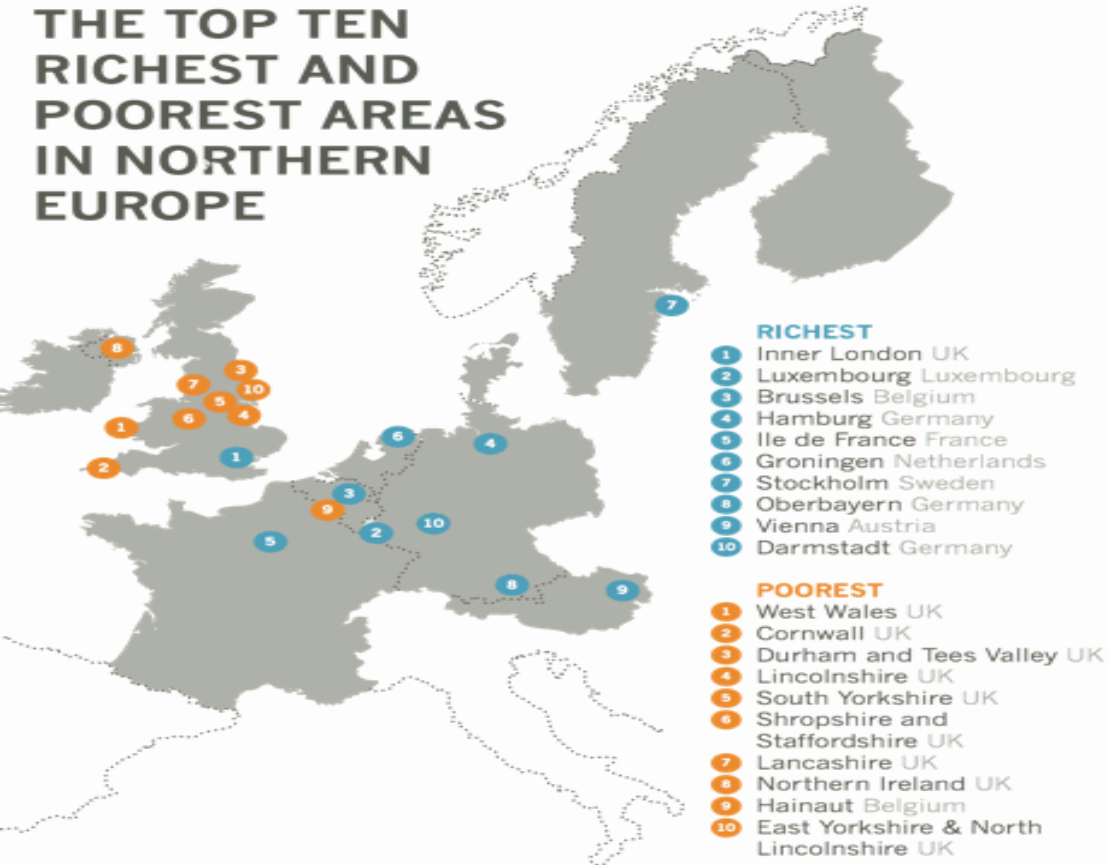


Mark Gamsu @markgamsu

The poorest regions in the UK are the poorest in Northern Europe

England's Northern regions remain the poorest in Northern Europe

THE TOP TEN RICHEST AND POOREST AREAS IN NORTHERN EUROPE



What does this mean?

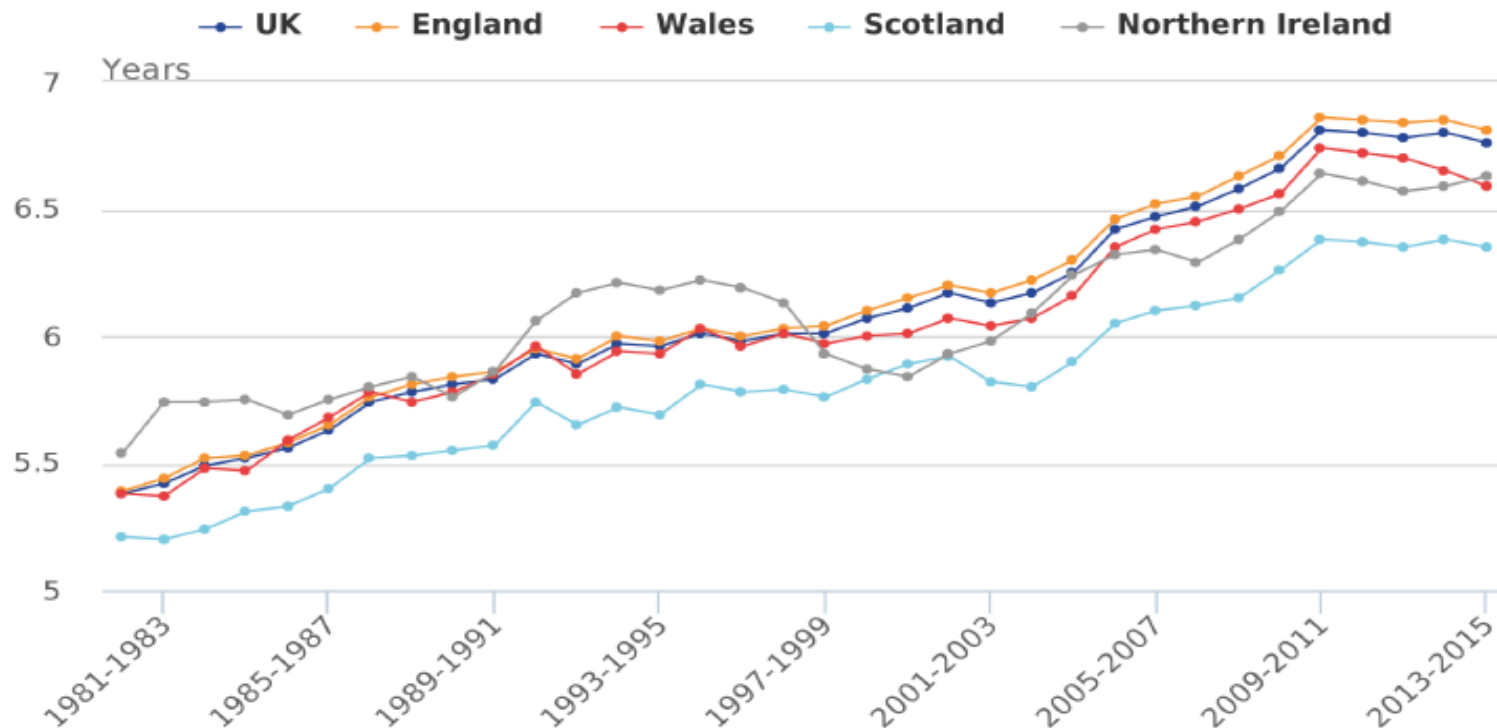
In the UK we think of ourselves as having similar standard of living to other countries in Northern Europe like France, Germany, Belgium, Holland and the Nordic Countries. These are our nearest neighbours. They share a similar economic history to us, and have experienced similar political stability since the second world war. We also have close ties as members of the European Union.

However, the poorest UK regions are by far the poorest in Northern Europe. This is because the UK is much more unequal than other countries, where there is nowhere as rich as London, but nowhere as poor as our poorest regions.

In 2016 Life expectancy is now going backwards in some northern LA areas (for the whole population) especially for those most dependant on the health and care system (i.e. aged over 85Yrs)

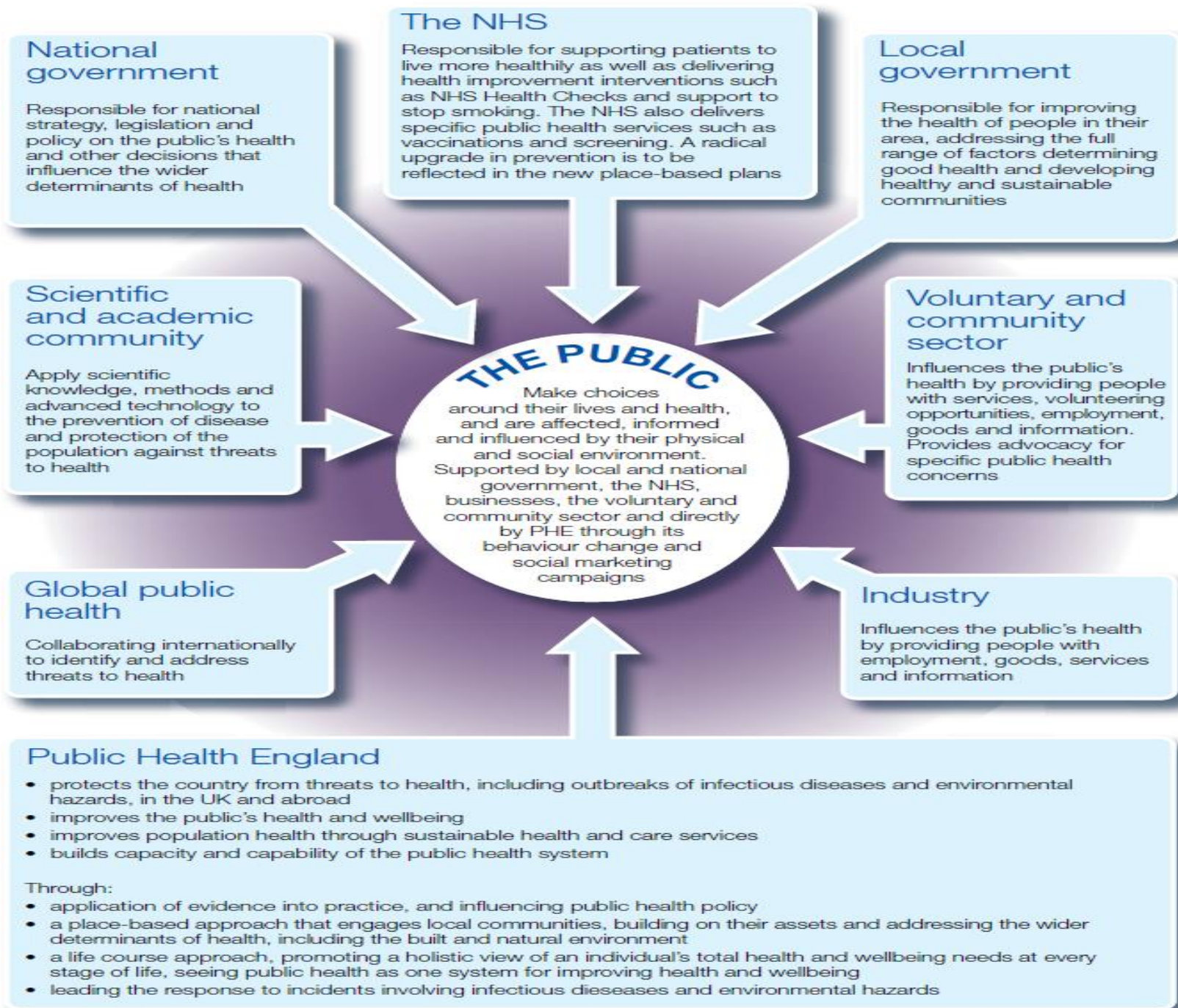
Figure 2b: Life expectancy at age 85, UK and constituent countries, 1980–1982 to 2013–2015

Females



Source: Office for National Statistics

Source: ONS (March 2017) National Life Tables, UK 2013-2015



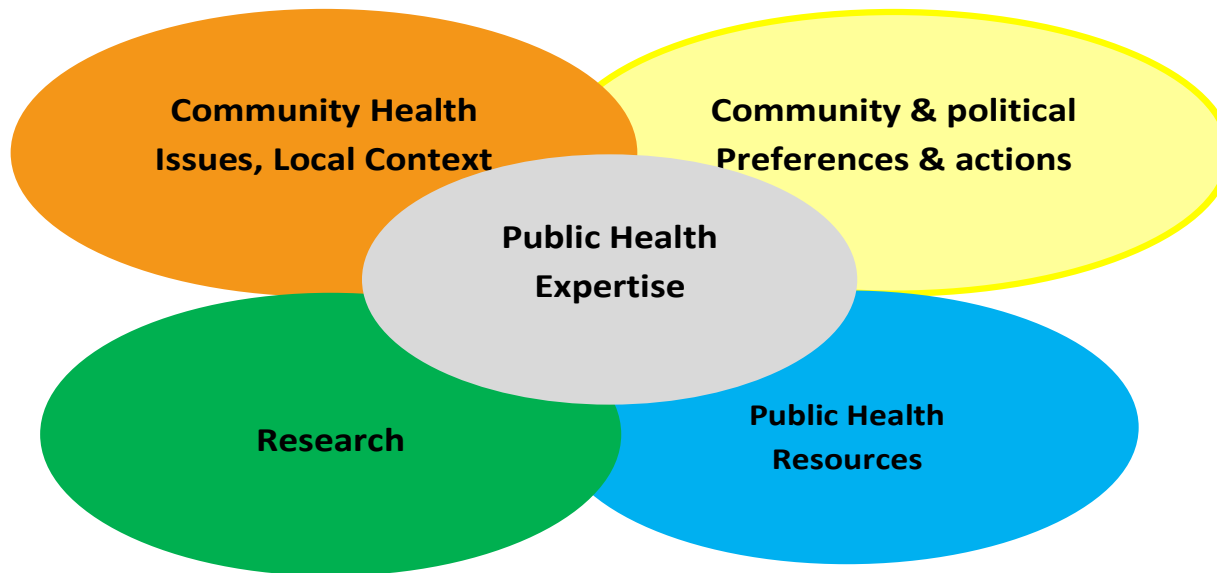
Q1 : Can we name 'the systems' that are killing us in
England?



Evidence-informed decision making involved integrating the best available research evidence into the **decision-making process**.

Additional factors, community health issues and local context, **community and political preferences and action and public resources**, create the environment in which that research **evidence is interpreted and applied.**”

Figure 1. A Model for evidence-informed Decision Making in Public Health, taken from the World Health Organisation



Q2:
Are we producing enough evidence to inform an integrated model of Evidence Informed Practice?

Relative contribution of the determinants of health

Health Behaviours 30%	Socio-economic Factors 40%	Clinical Care 20%	Built environment 10%
Smoking 10%	Education 10%	Access to Care 10%	Environmental Quality 5%
Diet/Exercise 10%	Employment 10%	Quality of care 10%	Built Environment 5%
Alcohol use 5%	Income 10%		
Poor sexual health 5%	Family/Social Support 5%		
	Community Safety 5%		

Source: Robert Wood Johnson Foundation and University of Wisconsin Population Health Institute. Used in US to rank counties by health status

Q3: Is the evidence in STPs really systematically addressing the causes of ill health?

Learning from Populism?

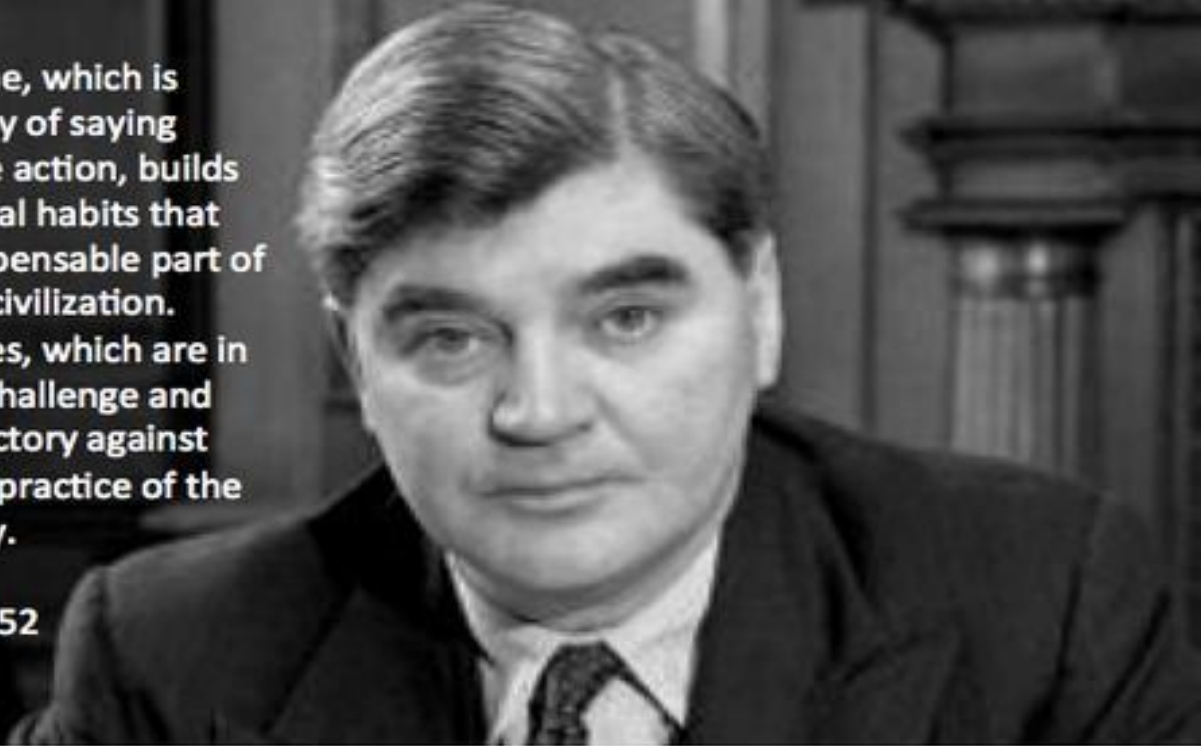
Q4: Does our evidence demonstrate a real understanding of the challenges of populism?

- Liberals believe knowledge should inform beliefs and shape values- **Populism** believes that values shape the knowledge we seek and evidence we accept.....
- “Having social support from an evolutionary point of view is far **more important than knowing the truth**”
- “**Partisanship** has been revealed as the strongest force in US public life- stronger than norms, independent of any facts:..the real question is “whose team are you on ?” Vox: David Roberts
- Pew study found a high level of science knowledge didn’t make Republicans any more likely to say they ‘believed in climate change’ , though it did for democrats” High levels of intelligence just enabled them to engage in, and articulate better, their **motivated reasoning**
- **Post Truth** 2016 Word of the year :“relating to or denoting circumstances in which objective facts are less influential in shaping public opinion than appeals to emotion and personal belief”

Source: theatlantic.com : This article wont change your mind: The facts on why facts alone can’t fight false beliefs: Julie Beck :March 13 2017

Preventive medicine, which is merely another way of saying health by collective action, builds up a system of social habits that constitute an indispensable part of what we mean by civilization. In this sphere values, which are in essence Socialist, challenge and win victory after victory against the assertions and practice of the competitive society.

In Place of Fear. 1952



THE FIELD IN WHICH THE CLAIMS OF INDIVIDUAL COMMERCIALISM COME INTO MOST IMMEDIATE CONFLICT WITH REPUTABLE NOTIONS OF SOCIAL VALUES IS THAT OF HEALTH.

NYE BEVAN

IN PLACE OF FEAR A
FREE HEALTH SERVICE
1952

Q5 Are we being collectivist enough in our solution seeking ?

Populism in Practice: Eric Pickles MP & The Daily Mirror

Q6 Are we politically engaged and public facing enough?

...tell from a roof.
 In 2014, Chelmsford Crown Court heard a maintenance man at Brentwood School was working to replace components in a bay window of a residential flat within the grounds.
 A 63-year-old employee was working on the roof of the

...bay window when his foot got caught and he fell approximately 2.6m to the ground below.
 He was rushed to hospital and found to have suffered injuries including a broken collarbone and chipped vertebrae.

...manner.
 Brentwood School Charitable Incorporated Organisation (BSO), pleaded guilty to breaching Regulation 4(1) of the Work at Height Regulations 2005, and was fined £40,000 and ordered to pay £1,477 in costs.

MP blasts NHS for treatment cut plans

A TORY MP has said there is a danger of "care by spreadsheet" as Brentwood and Basildon residents face treatment cuts as the clinical commissioning groups (CCG) try to plug a multi-million pound deficit.



Speaking out - MP Eric Pickles is concerned over healthcare

The proposed cuts come after the CCG said a rise in demand for services mean they are facing a £14 million deficit this year and next.

According to the CCG, the rapid demographic change has led to increasing pressure on health and care services which are not set up to cope with the corresponding growth in demand.

Because of the financial situation, the CCG is reviewing the local Service Restriction Policy, and will assess the changes before enforcing them.

Pain treatments are among the NHS services that face the axe, with the CCG proposing to stop funding of pain insert procedures including facet joint injections, hip and spinal injections and spinal cord stimulation.

Tory MP for Brentwood and Ongar Eric Pickles has said he does not agree with all decisions by the CCG.

He said: "I have met with

treating people who are in pain, or have other conditions which affect their day-to-day lives.

"There is a danger this is care by spreadsheet rather than care by need. If people have to live their lives crippled by pain rather than being allowed to enjoy themselves, it does not seem sensible to me."

Other services including travel injections, simultaneous joint replacements, cataract surgeries and programmes to help patients stop smoking have been judged to not cater to the wider needs of the population and to be of limited clinical value.

The CCG is also proposing that some treatments and procedures are subject to tighter restrictions than currently, including gallstone surgery.

A formal consultation has been launched, and residents are invited to have their say at a series of public meetings.

There is one on Friday, August 26 from 1pm at Emmanuel Church Hall, in Billericay.

Alternatively, you can express your views online with the consultation by visiting basildonandbrentwoodccg.nhs.uk/fit-for-the-future.

the Basildon and Brentwood CCG's accountable officer John Leslie to discuss the decisions the organisation is having to make.

"I am not saying everything they are doing is wrong, but the CCG does need to think long and hard about its primary role.

"It is supposed to be

Electrical fire risk warning to children

FIRE chiefs are warning parents to be aware of electrical items in children's bedrooms.

cal fire hazard in their room - with an average of ten electrical items in their bedroom.

in homes across the county and many of them are preventable. "We are urging people to take

mirror.co.uk

DAILY Mirror NEWSPAPER OF THE YEAR
Friday, February 17, 2017 65P

The A-Z of vitamins
What's worth taking, and what's not: Page 8

Miranda: I'm back and on song...
SEE PAGE 7

SOCIAL CARE SCANDAL

TORY CUTS KILLED 30,000

ABANDONED Elderly NHS patients are suffering

» Damning report on May's cruel austerity
 » Experts fear crisis can only get worse

BY BEN GLAZE
 THE social care crisis caused by Tory austerity was linked to an extra 30,000 deaths in one year, a report reveals.
 And that figure is expected to rise unless Theresa May urgently ploughs cash into the system. It is the first time a connection has been established between savage cuts and soaring deaths. The report said: "Since 2010, the impact of austerity on the NHS has been profound."
 Researcher Professor Danny Darling added: "We have looked at every possible cause and it just comes down to cuts."
 FULL STORY: PAGE 2

Should we do more of this...?

BE...

More **values based** in our narratives of evidence

More naming of **'what's killing us'**

More **public facing** in comments on evidence

More **"we are on your side** against the forces that make you ill"

More **collectivist** in our solution seeking

More based on **public and political preferences**

More **visible and noisy in our advocacy** of common sense solutions

More immediate

More **accessible** and engaged

More **challenging** and deliberative

More **explicit and context specific** in recommendations

.....more unashamedly populist !